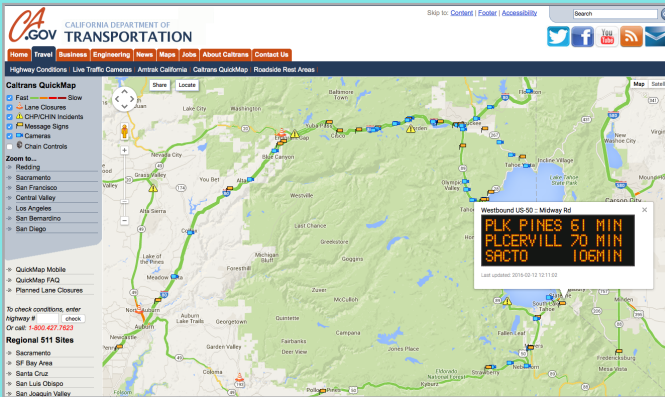




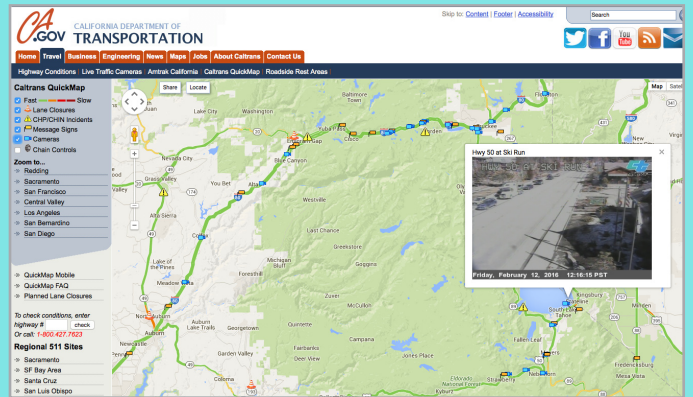
Heading to or leaving Lake Tahoe? KNOW BEFORE YOU GO!



Access **Caltrans' QuickMap** for real-time traffic information, highway cameras, electronic message boards with travel times (Highway 50), chain control locations and more! quickmap.dot.ca.gov/



Smartphone users, go to quickmap.dot.ca.gov/mindex.html or scan this QR code to access the mobile site.



Use our traffic camera map to view streaming video along the Interstate 80 and Highway 50 corridors, in the City of South Lake Tahoe and on Highways 89 and 267 in the Tahoe Basin. www.dot.ca.gov/dist3/departments/traffic/cameras/



Smartphone users, go to www.dot.ca.gov/research/its/cctv/d03/mobile.htm or scan this QR code to access the mobile site.

Visitors from Nevada



Nevada visitors can access Nevada Department of Transportation cameras here: <http://apps.nevadadot.com/cameras/default-Reno.asp> or call **511** or **1-877-NV-ROADS** for Nevada highway information.

No Internet access?

Call our highway information line at **1-800-427-ROAD (7623)** or tune into **AM-1610** for highway information.

Follow Caltrans District 3

on Twitter [@CaltransDist3](https://twitter.com/CaltransDist3) or like us on Facebook at: www.facebook.com/CaltransDistrict3

For information on Caltrans' construction projects in the Tahoe Basin go to: TahoeRoads.com

